

Sensor Faucet Soap Dispenser Manual

Thank you very much for buying the sensor soap dispenser

This sensor soap dispenser is equipped with an infrared sensor for activating the liquid soap dispenser pump;

In order to ensure the proper installation and use, please read the following instructions carefully. Improper installation or use may cause a malfunction and/or void the warranty.

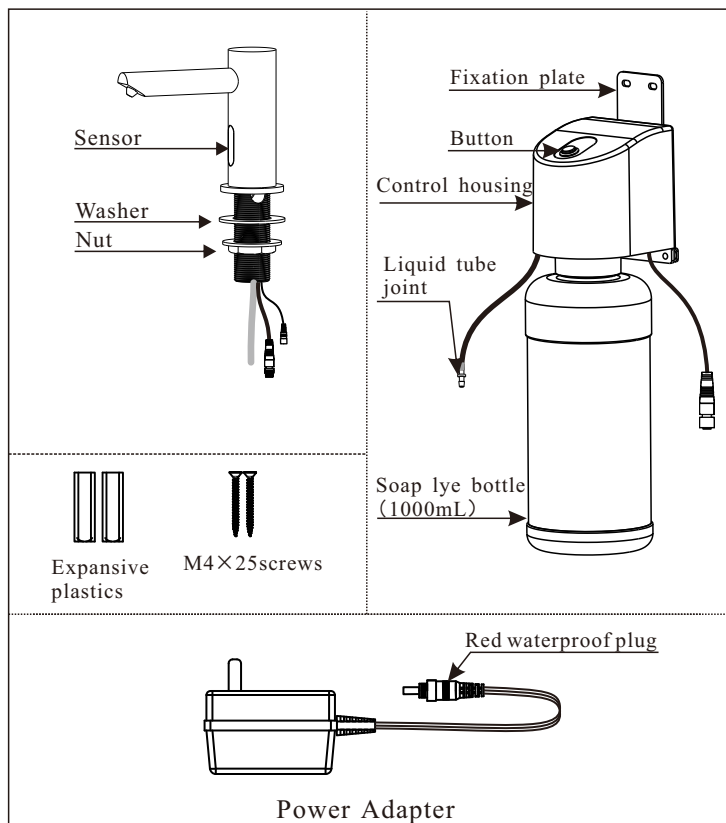
1. SPECIFICATIONS

POWER	AC100V-240V
Sensing distance	5~20cm
Volume dispensed	Each time 0.6-1.0mL
Bottle Capacity	1000mL

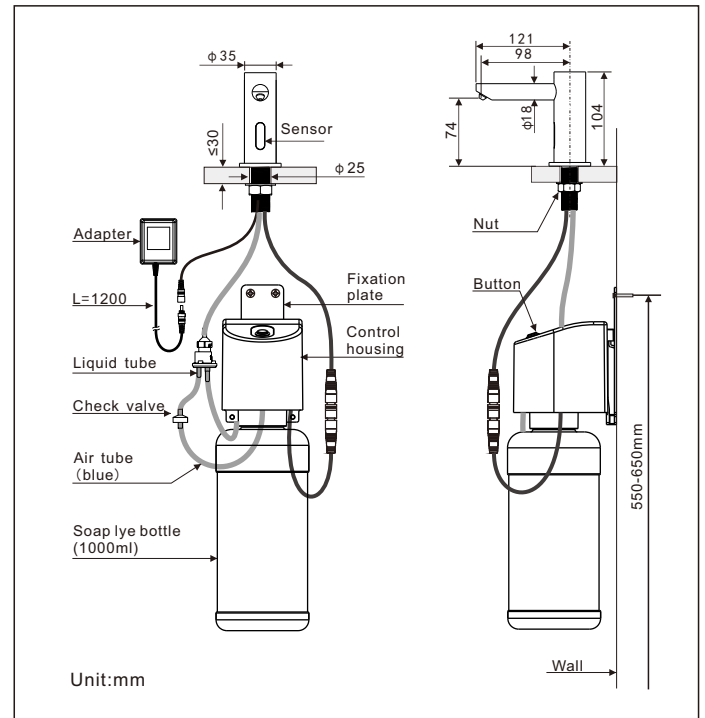
2. IMPORTANT PRECAUTIONS

- Avoid excessive impact or force on the faucet body.
- Don't install this product in areas affected by strong magnetic.
- Force or severe vibration. Avoid exposure to direct sunlight.
- Since the body of the product is composed of metallic and molded parts, clean it with neutral detergent and soft cloth only.
- Never use benzene, thinner or acid detergent.
- If the sensor is stained with soap water or other impurities, the product may malfunction.
- Any impurities in the water may reduce the flow rate or lead to malfunction.

3. PRODUCT STRUCTURE



4. INSTALLATION DIAGRAM



5. INSTALLATION

1) Install faucet body

- Insert the faucet body in the central hole of the wash basin.
- Put the sensor wire, adapter wire, the air tube and the liquid tube through the rubber washer and the nut, then fix the faucet body with the nut.

2) Install the control housing

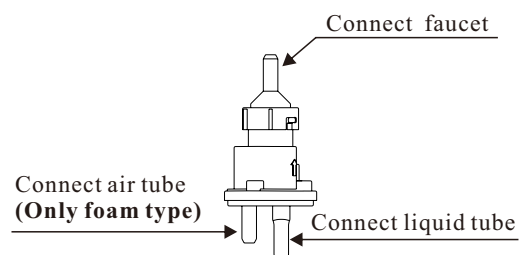
- Put the control box bracket on the wall, use a pencil to draw two positioning holes, then use the impact drill to drill two mounting holes; and push the expansive plastics into the mounting holes, locking the control box bracket on the wall with the M4x25mm screws.

Note : the control box bracket shall not be too far away from the faucet body, otherwise the two tubes cannot be connected between the faucet body and the control housing respectively.

- Pour soap into the soap lye bottle, and then tighten to the control housing.

3) Connect the tube line and wire line

- Connect the liquid tube to the anti-backflow device.
- Connect the black water-proof plug, then lock the plug, and connect the red water-proof plug.



Sensor Faucet Soap Dispenser Manual

5) Debug after installation

- (a) In 20 seconds, according to the environment, the system will automatically adjust sensing distance, please don't put any objects in front of the sensor.
- (b) Then press the button once, the soap liquid will quickly fill the liquid tube.
- (c) At last please put hands in the induction range, the faucet will automatically spew soap once.

6. USE INSTRUCTION

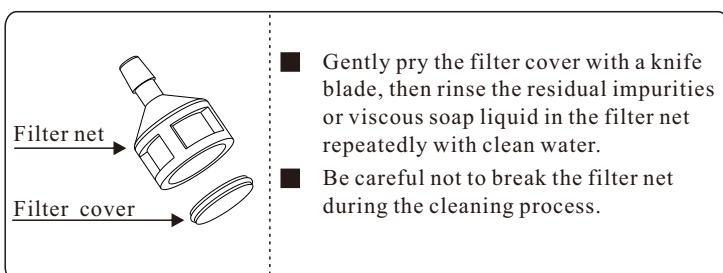
- 1) When putting your hand into the sensing range, the faucet will spray soap once, and before the hands no left the sensing range, the faucet will no longer spray soap.
- 2) If need to adjust the soap volume of every spraying, please contact with the dealer.
- 3) In order to avoid to jam the soap tube, if no use in 48H, the faucet will automatically spray soap once.
- 4) If not using for long time, please clean the lye bottle and liquid tube, the detail steps as below:
 - (a) Pour out all soap liquid, and clean the soap lye bottle until no foam in the bottle.
 - (b) Press the button once after Putting some water into bottle, the soap tube will quickly be filled. Then rinse the tube until no foam.
 - (c) Press the button for more than 2 seconds to empty the soap tube.
- 5) Please use the special soap of electronic induction or foam soap, no particulate impurities or floccs, otherwise the tube will easily be jammed and lead to product failure.

7. DAILY USE AND MAINTENANCE

- 1). When using for the first time or changing the soap, please press the green button on the control housing to quick fill up liquid soap tube.
- 2). When the sensor is blocked by dirt or foam, please wipe away using a damp cloth. When cleaning around the sensor, please be careful not to scratch the surface of the sensor.
- 3). Forbidden to directly wash the faucet body with water to avoid accidents caused by damage to internal circuits.
- 4). Please clean the nozzle and the filter net when refill the liquid soap everytime.

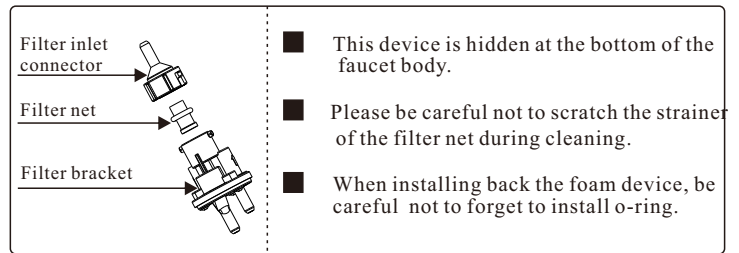
If the dispenser is not used for a long time or has not been carry out periodic maintenance for a long time, liquid soap remaining in the tube will dry and lead to spout poorly. This is not covered by the product warranty. Please refer to the following steps for self-inspection and maintenance.

(a). Check and clean the filter net of the bottle

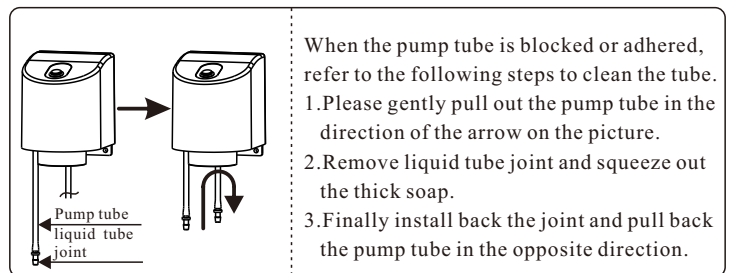


(b). Check whether the liquid tube or pump tube is blocked by viscous soap. If yes, pull out the tube joint and squeeze out the viscous soap of the soap tube.

(c). Cleaning foaming device



(d). Cleaning pump tube



8. TROUBLE SHOOTING

Check the following before contacting the service center.

1. Soap does not flow when hands are placed within the sensing range.

CAUSE	CHECKPOINT
a) Suspension of power supply	-Switch on the power
b) Soap used up	-Add soap liquid
c) Liquid outlet blockage	-Cleaning liquid outlet
d) There are foreign bodies in the induction range	-Remove foreign bodies
e) Filter net in the bottle blockage	-Cleaning filter net
f) Liquid tube is bent	-Straighten the liquid tube

2. Soap liquid flow is not smooth

CAUSE	CHECKPOINT
a) Soap is too thick	-Use the special soap of electronic induction
b) Liquid outlet blockage	-Cleaning liquid outlet
c) Filter net in the bottle blockage	-Cleaning filter net