

TWO HANDLE LAVATORY CENTERSET FAUCETS

Models 994329

Finish: Chrome/Brush nickel/ORB

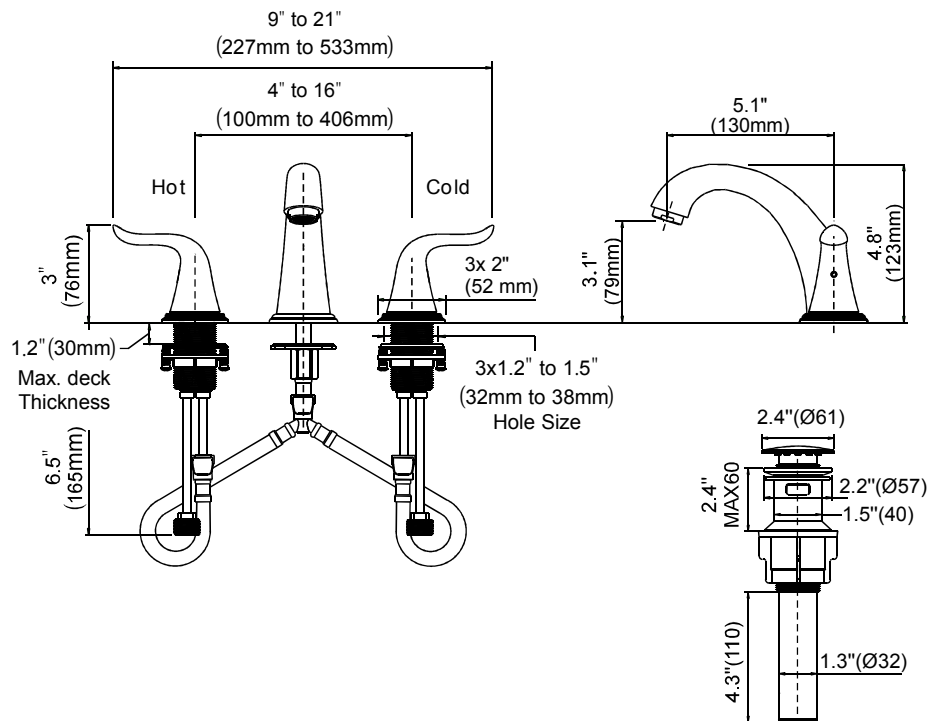
You may need



For easy installation of your faucet you will need:

To READ ALL the instructions completely before beginning.

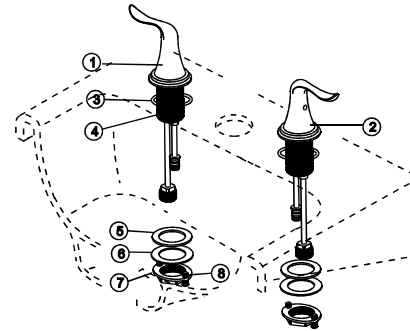
To READ ALL warnings, care, and maintenance information.



OPERATION

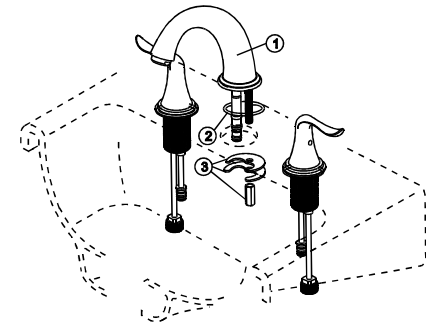
- Double lever style handles
- Maximum handle(s) rotation angle is 90° to full on
- Rotate hot side counter clockwise to open (clockwise to close)
- Rotate cold side clockwise to open (counter clockwise to close)

1



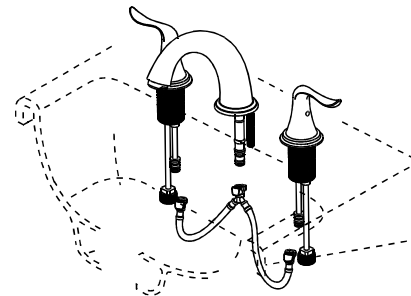
SHUT OFF WATER SUPPLIES.
Slide hot (1) and cold (2) end valves with gasket (3) through sink. Secure end valves with washers (5)(6) & threaded brackets (7). Hand tighten brackets (7) onto shank (4). Lock brackets into position by tightening screw (8).

2

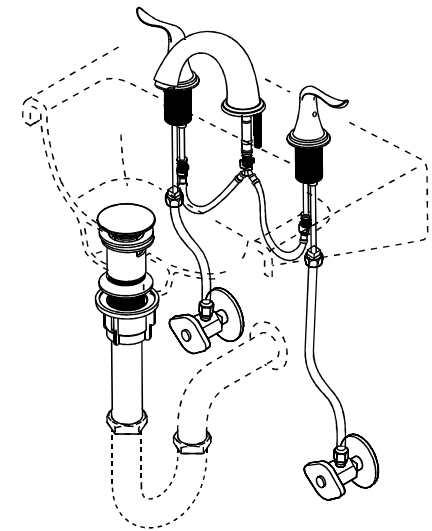


Install spout (1) gasket (2) , Secure with washer and nut (3). Note: If sink is uneven, use silicone under the gasket.

3



Align tabs and tabs on quick connects . Push quick connects firmly upward and snap onto receiving tube tab . Pull down moderately to ensure each connection has been made.



Attach supply lines **(not included)**. Do not overtighten. Turn water back on.